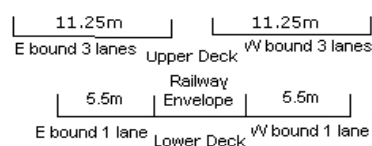
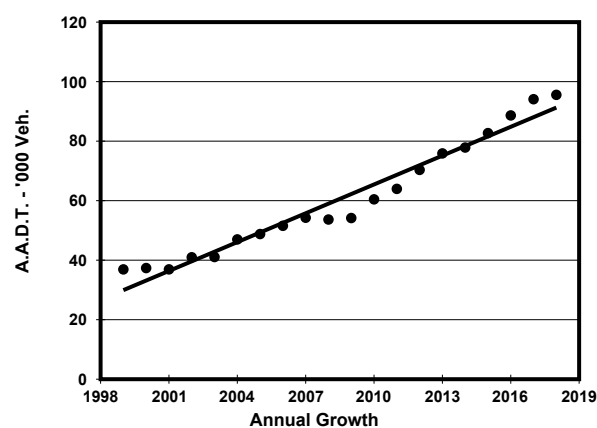
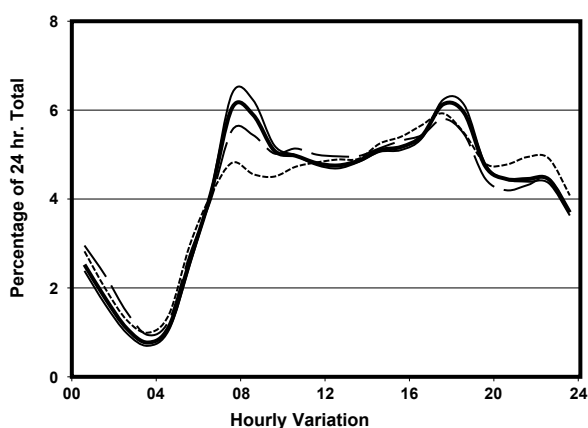
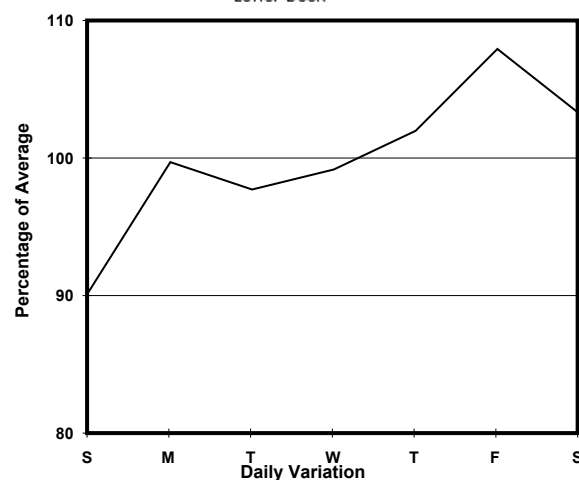
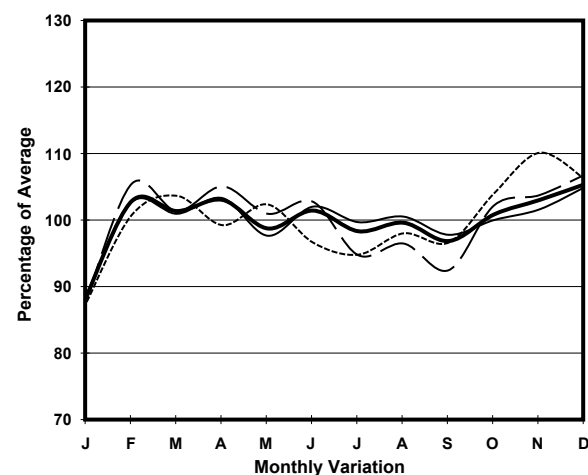


YEAR 2018
CORE STATION 5027
ROAD NETWORK MAJOR
ROAD TYPE EXPRESSWAY

LINK LANTAU LINK (from TSING MA BRIDGE EASTERN
END AT TSING YI to NGONG SHUEN AU)



1. TRAFFIC FLOW VARIATION AND GROWTH



— All day - - - - - Mon. - Fri. Sat. - - - - - Sun.

2. TRAFFIC CHARACTERISTICS (BY DIRECTION)

Parameter	All - Day	Mon. - Fri.	Sat.	Sun.
EAST BOUND				
A.A.D.T.	48100	48880	50020	44030
R 12 / 24 - %	63.3	64.2	62	59.7
R 16 / 24 - %	82.1	82.8	80.2	80.5
AM Peak Hour	0800-0900	0700-0800	0800-0900	0700-0800
One-way flow at AM peak hour	2300	2390	2380	1900
T - % (AM)	-	13.4	-	-
PM Peak Hour	1800-1900	1800-1900	1700-1800	1700-1800
One-way flow at PM peak hour	3500	3750	3290	2910
T - % (PM)	-	14.9	-	-
Prop.of commercial vehicles - 16 hr.	-	18.8	-	-
WEST BOUND				
A.A.D.T.	47460	48410	49140	42790
R 12 / 24 - %	65.1	65.7	64.5	62.2
R 16 / 24 - %	82.5	83.1	81.1	80.2
AM Peak Hour	0700-0800	0700-0800	0700-0800	0700-0800
One-way flow at AM peak hour	3520	3810	3460	2280
T - % (AM)	-	20.7	-	-
PM Peak Hour	1700-1800	1700-1800	1700-1800	1600-1700
One-way flow at PM peak hour	2400	2440	2460	2300
T - % (PM)	-	22.8	-	-
Prop.of commercial vehicles - 16 hr.	-	19.8	-	-

3. OTHER INFORMATION AND COMMENT

4. Vehicle classification and occupancy - Monday to Friday

Time		Class of vehicle									
		Motor Cycle	Private Car	Taxi	Private LB	PLB	Goods veh.		Non Fr. Bus	Fr. Bus	
							Light	M & H		SD	DD
0700-0800 Peak hour	Pro	2.2	38.0	31.5	0.4	0.0	10.0	8.0	5.6	0.0	4.2
	Ocp	1.0	1.5	2.0	4.2	0.0	1.7	1.2	32.7	0.0	51.3
0800-0900	Pro	1.2	43.8	26.5	0.1	0.0	11.1	8.5	5.2	0.0	3.7
	Ocp	1.1	1.4	2.2	2.0	0.0	1.4	1.3	23.2	0.0	60.0
0900-1000	Pro	0.7	38.2	25.4	0.2	0.0	16.1	11.0	4.2	0.0	4.2
	Ocp	1.0	1.4	1.7	4.5	0.0	1.5	1.2	16.8	0.0	33.8
1000-1100	Pro	0.8	33.8	28.1	0.3	0.0	15.6	13.1	4.3	0.0	4.1
	Ocp	1.1	1.6	2.4	8.8	0.0	1.4	1.3	19.1	0.0	29.4
1100-1200	Pro	0.6	34.9	29.8	0.3	0.0	15.9	10.0	4.5	0.1	4.1
	Ocp	1.0	1.6	2.4	2.0	0.0	1.5	1.2	24.6	1.0	26.9
1200-1300	Pro	0.6	36.7	26.8	0.4	0.0	15.9	10.8	4.5	0.1	4.4
	Ocp	1.3	1.7	2.4	1.5	0.0	1.5	1.1	19.9	1.0	31.2
1300-1400	Pro	0.9	34.3	29.7	0.2	0.0	14.0	12.5	3.7	0.0	4.9
	Ocp	1.0	1.5	2.2	5.5	0.0	1.5	1.2	18.7	0.0	33.3
1400-1500	Pro	1.1	37.9	23.8	0.4	0.0	15.1	14.3	3.4	0.0	4.1
	Ocp	1.2	1.6	2.4	3.8	0.0	1.5	1.3	13.4	0.0	30.7
1500-1600	Pro	0.6	35.5	30.8	0.7	0.0	12.0	12.7	3.6	0.0	4.0
	Ocp	1.0	1.6	2.3	3.8	0.0	1.5	1.2	15.7	0.0	28.3
1600-1700	Pro	0.9	35.6	24.7	0.5	0.0	16.1	11.4	6.7	0.0	4.1
	Ocp	1.0	1.7	2.2	2.2	0.0	1.5	1.2	15.7	0.0	42.4
1700-1800	Pro	1.5	42.0	23.2	0.4	0.0	14.1	8.7	6.0	0.0	4.1
	Ocp	1.0	1.7	2.3	1.8	0.0	1.6	1.1	20.6	0.0	44.8
1800-1900	Pro	1.3	50.6	22.7	0.1	0.0	7.7	6.5	6.9	0.0	4.0
	Ocp	1.1	1.7	2.3	1.5	0.0	1.5	1.1	25.7	0.0	56.9
1900-2000	Pro	1.3	45.7	28.4	0.0	0.0	7.2	8.6	4.7	0.0	4.1
	Ocp	1.1	1.5	2.0	0.0	0.0	1.4	1.1	21.2	0.0	41.1
2000-2100	Pro	0.9	39.3	32.8	0.0	0.0	6.4	10.9	4.7	0.0	5.0
	Ocp	1.2	1.3	2.0	0.0	0.0	1.3	1.1	16.8	0.0	33.4
2100-2200	Pro	0.4	39.9	37.1	0.1	0.0	5.0	9.7	2.3	0.0	5.5
	Ocp	1.0	2.1	2.0	3.0	0.0	1.3	1.1	7.3	0.0	30.9
2200-2300	Pro	1.0	40.2	37.5	0.0	0.0	3.7	10.3	2.3	0.0	4.9
	Ocp	1.0	1.5	2.1	0.0	0.0	1.2	1.0	12.3	0.0	29.3
16 hours	Pro	1.0	39.4	28.3	0.2	0.0	11.7	10.3	4.7	0.1	4.3
	Ocp	1.1	1.6	2.2	3.5	0.0	1.5	1.2	20.4	1.0	38.2

Legend

Pro. Proportion of vehicles in % (Sum may not add up to 100% due to figure rounding)*

Ocp. Average occupancy of vehicles including both driver and passengers*

M&H Medium and Heavy

***** All traffic data are collected from combined bounds except for one way traffic